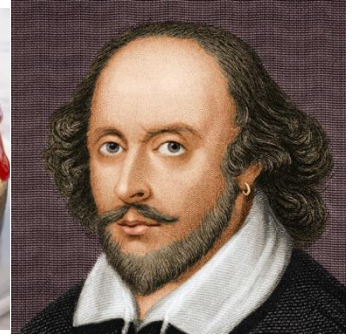




Monday, Apr 23, 2018



THE INFORMATION BELOW IS EXCLUSIVELY FOR THE USE OF PLBC MEMBERS

PRESIDENT'S CORNER: As previously mentioned we have arranged for First Aid and Defibrillator training on the 3rd of May from 10 am to noon at the Clubhouse. A sign-up sheet has been posted and we still have room for others to join us. The cost is \$15 per person. The focus is on basic first aid and the use of our on-site defibrillator.



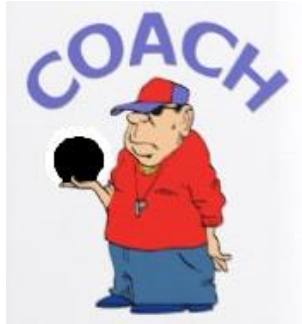
For some time the Board of Directors has been considering options for enhancing the management of the Club's refreshment area. It has been a long standing tradition to provide open access to liquid refreshments on club premises. After careful deliberation a decision was made to make the area a bit more secure and provide keys to members who serve drinks on a regular basis. Although this might introduce a slight inconvenience for some of our members we trust you will understand that we are simply implementing a good business practice for the benefit of the Club as a whole.

Our Open House was held on the 20th and 21st of April and thankfully the weather cooperated. We had a very good turnout and 33 individuals signed up for novice training scheduled for this week. A very big thank you goes out to Carol Bucyk, Pat Kelly, Cheryl Baker, Shelley Hardisty, and all the coaches and volunteers who made these 2 days a success. I should also mention that representatives of the press were there as well so watch for coverage in our local newspapers.

Now that we have novices on site I would like to remind all members to wear their nametags.

Lloyd Pelton - President

COACH'S CORNER: We will need assistance with the novice coaching this week. If you can help, please contact me at 250-951-0670 or at patandgwen@telus.net. Novice coaching is from Tuesday 24th to Friday 27th, mornings at 9.30am and afternoons at 1.00pm each for approximately two hours
Thank you. Pat Kelly.



GREENS INFO: Rink and Play Restrictions.

We will be starting the season with some temporary rules aimed at reducing foot traffic on bare and recently germinated patches near the edges of the green.

- All play will be in the North to South direction only. Rink 1 is not to be used.
- The minimum location of the delivery mat will be more than 2 metres from the ditch. No part of the delivery mat may be closer to the ditch than indicated by a white marker on the side boards, about 4 metres from the ditch. There may also be a chalk line on the green showing this line.
- If the jack is delivered beyond the line at the other end it will be centred on the 4 metre line, not the 2 metre mark. If the jack is pushed closer to the ditch by a bowl during play it will remain there.

Although the minimum distance from ditch to mat has increased, please do not always place the mat in the same place, there is still about 8 metres of space between the temporary minimum and the first hog line. Let's not create bare patches around the 4 metre mark to replace the ones at the 2 metre mark.

Martin. Greenkeeper

BUY/SELL SHEET: The buy/sell sheet has been updated and can be found by clicking on the link at the end of this MMM.

CLUB TOURNAMENT INFO: I am pleased to announce that this year, Andy Burton has agreed to be the draw master. Please, if you are willing to volunteer to be a draw master at any of the draws, contact Andy (andyplbc01@shaw.ca or 250-248-2341) as he would be glad to have your help.



The sign-up sheet for the Sunday, Kick-off Tournament appears to be full but it is **NOT**. Four members (so far) have had to withdraw. There were only two names on the waiting list so I ask if you can play on Sunday (2 games) **PLEASE** add your name to the waiting list as there is a good possibility that you can play.

The sign-up sheets for league play will be posted this morning (Apr23) @ 10:00 am. Openings for: Monday afternoon cut-throat ladder league @ 2:00, Tuesday and Wednesday mixed pairs @ 6:30 pm and Thursday evening for mixed triples @6:30. It would be awesome to have all these leagues filled to start the year with flying colours.

Ken Bucyk, your games committee director

BEACHFEST UPDATE: We have been awarded 4 shifts at this summer's Beachfest Sand Sculpture event. More info to follow closer to the date.
Thanks, Terry Nichols

SUPPLIES UPDATE: There is a new supply of Bett's Bowl Grip and spray chalk in the supply cabinet.

The new prices are as follows - Bett's Bowl Grip \$12.50 each
Spray chalk \$10.50 each.

We are asking that payment should be put in an envelope, sealed and put in the Treasurers lockbox in the upper cabinet. Also, members should indicate on the outside of the envelope the total \$ enclosed as well as the item(s) purchased.

Thanks. Bill Burgess

LINKS: [Club Website](#)

[2017 Calendar](#) [2017 Open Tournament Schedule](#) [Club Contacts Page](#)

[Members' Corner:](#) [MMM](#) and [Buy and Sell](#)
[Photos](#) [Sponsors](#) [Facebook](#)

e & oe

